



Community Connection

Louis de la Parte Florida Mental Health Institute, Department of Child & Family Studies — Volume 10, Issue 1 • February 2007 - July 2007

CARD Staff

Karen Berkman, CARD Director
Lise Fox, DARES Div. Director
Don Kincaid, DARES Div. Asst. Director

Nila Benito, UCEDD Community Supports Coordinator
Mary-Kay Buntun-Pierce, Data Coordinator
Jean Caldicott, Resource Specialist
Donna Casella, Training Coordinator
Tanisha Clarke-Dobney, UCEDD Admin Coordinator
Dave Guido, UCEDD Employment Coordinator
Vivian Herrero, Spanish Translator/Intakes
Nicole Millar, Graduate Student
Carly Morgan, Program Assistant
Christine Rover, Community Inclusion Coordinator
Bobbie Vaughn, UCEDD Diversity Coordinator
Kim Weiss, Graduate Student

Neill Broderick, CARD Consultant
Michelle Duda, CARD Consultant
Shelton Gilyard, CARD Consultant
Amanda Keating, CARD Consultant
Christine McNamara, CARD Consultant
Mary Reed, CARD Consultant
Mindy Stevens, CARD Consultant
Kimberly Webb, CARD Consultant
Ellie Weber, CARD Consultant

Ft. Myers Staff

Ft. Myers Branch Office
Connie Philbrook, Senior Secretary
Anne Allen, CARD Consultant
Leigh Anna Nowak, CARD Consultant

Constituency Board

Sarina Adeni
Michael McCroskery
Ann Reynolds
Julie Sneed, Chair
Nicole Torres, Vice Chair
Chandra Williams



Director's Note

I hope you all had a wonderful holiday season with your families. CARD staff has been very busy planning a variety of events that we hope you will participate in this year. Save the date April 20, 2007 for our fantastic Fiesta by the Bay event. Not only is this a great evening of food, dancing, and prizes, you are also supporting CARD's ability to give back to our community of families through our various special events. Our Autism Community Leadership Award and the Dancing Under the Stars are two such events that are supported by your contributions.

In addition, we have been working on new multimedia products to provide you with interesting information and training. You can now find a new section on the CARD website that is called FAQs for frequently asked questions. This is a shared segment with Autismlink from Pittsburgh, Pa. You can now get answers to many of your questions just by clicking on a link and you will hear CARD staff providing the audio responses. The FAQs will continue to grow as we add new information along with other professionals from around the country.

The Division of Applied Research and Educational Support (DARES) is home to CARD and the newly-funded Florida Center for Inclusive Communities. The Florida Center for Inclusive Communities is a University Center for Excellence in Developmental Disabilities Education, Research and Service (UCEDD). University Centers of Excellence are established at major research universities in every state and territory of the United States through federal funding by the Administration on Developmental Disabilities (ADD). The Florida Center for Inclusive Communities will work in partnership with CARD and other research, demonstration, and training projects in DARES



Dr. Karen Berkman, CARD Director

to ensure that individuals with developmental disabilities have improved access to the supports and services needed for achieving full inclusion and participation in society. The Center will be engaged in the provision of interdisciplinary training, technical assistance to service systems and programs, model program development, research, and information dissemination activities. The activities of the Center will be directed by Lise Fox, Don Kincaid, and Marc Tasse.

Have you noticed someone new answering the phones here at CARD? We are very pleased to have Carly Morgan join our team as Program Assistant. Also, we have two new CARD consultants, Neill Broderick who comes to us from Vanderbilt University and Ellie Weber from Pittsburgh, PA. CARD also has two graduate students currently working with and supervised by our team. Kimberly Weiss is pursuing her Masters in Applied Behavior Analysis and Nicole Millar is attending the Masters in Social Work program. We are very excited to have an opportunity to train the next generation of professionals who will be working with our constituents.

We welcome your ideas for future training products and web additions. Please contact us anytime with feedback. Our goal is to provide the best support and consultation possible. Hope to see you all soon!

—Karen Berkman, Ph.D.

HIGHLIGHTS IN THIS ISSUE

| | | | |
|--|------|--|------|
| Director's Note | p. 1 | Walk for Autism Research-2006 | p. 4 |
| Visual Strategies and Communication Technology... .. | p. 2 | The Gifts of Love Auction for Autism | p. 4 |
| CARD Staff Participate on Travel Assistance Device Advisory Board | p. 2 | Positive Beginnings: Supporting Young Children with Challenging Behavior | p. 5 |
| CARD-USF To Host Autism and Co-existing Mental Health Disorders Conf. | p. 3 | What's New on the CARD Website? | p. 5 |
| Ofreciendo Servicios en tu Idioma | p. 3 | Autism Support Groups | p. 6 |
| Save the Date for Fiesta by the Bay | p. 4 | CARD Gift/Pledge Form | p. 7 |



Center for Autism & Related Disabilities
 University of South Florida
 Louis de la Parte
 Florida Mental Health Institute
 Department of Child & Family Studies
 Division of Applied Research
 & Educational Support
 13301 Bruce B. Downs Blvd.
 Tampa, FL 33612-3899

Phone: 813-974-2532
 Florida only: 1-800-333-4530
 FAX: 813-974-6115
 E-mail: card-usf@fmhi.usf.edu
 http://card-usf.fmhi.usf.edu

Our Mission

The mission of the Center for Autism & Related Disabilities (CARD) at the University of South Florida is to provide support and assistance that optimizes the potential of people with autism and related disabilities. Our effort to achieve this mission is exemplified in the four “components for caring” that are the focus of our work:

- Direct Assistance – Providing individualized support for people with autism and related disabilities, and their families, in natural community settings.
- Technical Assistance & Consultation – Undertaking activities on behalf of programs (e.g., classroom, supported living residence, supported employment site, etc.) that serve people with autism and related disabilities.
- Professional Training – Providing instruction on autism and related disabilities through our workshops, conferences, in-service training, and college courses.
- Public Education and Awareness – Developing and disseminating information about people with autism and related disabilities.

As one of seven regional, university-based CARD sites, CARD-USF provides its services to individuals with autism and related disabilities, their families, related professionals, and the general public throughout a fourteen county catchment area in west, central, and southwest Florida.

Endorsement Policy

As a policy, CARD will not lend its name to the endorsement of any specific program, practice, or model that is offered for service to people with autism and related disabilities. However, the sharing of information and training opportunities are key functions of the CARD program.

Events, activities, programs, and facilities of the University of South Florida are available to all without regard to race, color, marital status, sex, sexual orientation, religion, national origin, disability, age, Vietnam or disabled veteran status as provided by law and in accordance with the University's respect for personal dignity.

Visual Strategies and Communication Technology for Individuals with Autism Spectrum Disorders: An Open House

Save the date: March 31, 2007 for CARD-USF’s first Open House to showcase visual strategies and communication technologies.

CARD-USF will host a “make and tech” day on Saturday, March 31, 2007 from 10am to 2pm at the FMHI Westside Conference Center (watch your mail and email for information as the date approaches).

The event will showcase low-to-high tech solutions and ideas and focus on:

- Evidence-based practices shown to be effective with individuals with autism spectrum disorders
- Ideas and strategies that families can take home that day & put into practice with immediate, positive results
- Present ideas & strategies in ways that show families what possibilities are out there, and how they might implement them

There will be information booths about various types of technology, and some local and regional agencies that provide consultative services.

There will be brief appointment scheduling during the day for hands-on assistance with learning techniques that can be replicated at home. Bring an issue, make an appointment at a station, and walk away with a solution. Types of solutions available will include things like schedules, written stories to address social communication, and choice boards.

While waiting for your appointment, you can visit booths and learn more about various types of technologies and agencies.

If you have any requests for types of technology or a visual communication strategy you would like to see, please e-mail Jean Caldicott at jcaldicott@fmhi.usf.edu or call 813-974-6439, and we will do our best to try to fill that request.

CARD Staff Participate on Travel Assistance Device Advisory Board

This year, the Center for Autism and Related Disabilities has made great strides in collaborating with new partners and professionals. One such partnership has occurred with the Center for Urban Transportation (CUTR). CUTR has initiated a new project to improve travel training for individuals with developmental disabilities. Transportation is often an essential component of living independently and gaining employment. However, learning to use public transportation is sometimes difficult due to the skills required. For example, getting off at the correct stop requires the rider to signal the driver by ringing a bell or pulling a string prior to his or her destination. The planning, timing, and attention required to be successful in navigating the public transportation system is sometimes difficult to achieve. The Travel Assistance Device (TAD) project hopes to utilize GPS technology within cell phones to prompt users when to signal the driver that their stop is approaching. Travel trainer Mark Sheppard of HARTline believes utilizing the GPS technology may shorten the time it takes for individuals new to the bus system to become travel trained.



This software would also allow caregivers and service providers to track the carrier’s movement while providing travelers with the ability to make calls for help should problems arise. Amanda Keating was asked to serve on the advisory board for this project and to provide feedback on research and technology design components. “Any time we can assist professionals in the development of products that promote the independence of individuals with autism spectrum disorders, it is time well spent,” said Amanda. The principal investigators for this innovative project include: Sean Barbeau, Philip Winters, Nevine Georggi, Rafael Perez, and Miguel Labrador.

CARD-USF To Host Autism and Co-existing Mental Health Disorders Conference

Individuals who have an autism spectrum disorder may have mental health problems in addition to the neuro-developmental problems that define autism. In the past, there was a tendency to attribute mental health symptoms in children and adults diagnosed with autism to the disability itself. The data suggest that depression, anxiety, compulsive behaviors, attention problems, hyperactivity, and sleep problems occur commonly in individuals with autism. Tics and Tourette's disorder appears to occur in relatively few individuals with autism.

Schizophrenia occurs infrequently. Individuals with autism have multiple factors that interfere with the assessment of their mental states. In addition, clinical features of autism and the unsuitability of subjective diagnostic criteria make the diagnosis of psychiatric disorders difficult in many individuals who have autism (Lainhart, 1999).

In response to seeing a growing constituency with multiple diagnoses, CARD-USF is planning a one day conference on autism and co-existing mental health



disorders. The purpose of this conference is to train diagnosticians, educators, and others on the signs and symptoms of autism spectrum disorders and mental health issues so they are better able to distinguish between the clinical features of a mental health diagnosis and the developmental features of autism.

CARD-USF has secured Dr. Martin Lubetsky, MD, Associate Professor of Psychiatry, University of Pittsburgh School of Medicine, and Director of the John Merck

program at the University of Pittsburgh Medical Center as the keynote speaker. The John Merck Program serves children, adolescents and adults with autism and developmental disabilities. Dr. Lubetsky is a psychiatrist with a great deal of experience with autism and mental health issues. Speakers will be addressing the more common co-existing disorders, such as: sleep, anxiety/OCD, ADHD, depression, and bipolar. The content of the sessions will focus on identification/diagnosis, treatment/medication, and potential resources. The conference is set for early May 4, 2007 at the Marriott Tampa Airport.

References

Lainhart, Janet E. (1999). Psychiatric problems in individuals with autism, their parents and siblings. *International Review of Psychiatry*; 11, 278-298.

This article is an explanation of services available to Spanish speaking families

Ofreciendo Servicios en tu Idioma

El Centro para el Autismo y Condiciones Relacionadas de la Universidad del Sur de la Florida reconoce la necesidad, dentro de la comunidad hispana, de facilitar la comunicación y ofrecimiento de servicios en español. Para este fin, CARD cuenta con los servicios de esta servidora, Vivian Herrero, con una posición nueva llamada "Facilitadora de Enlace para las Familias Hispánicas".

Las familias hispanas que se están enfrentando a la situación de tener un miembro de su familia con un diagnóstico de autismo o alguna condición relacionada, muchas veces prefieren tener recursos en español, para cuando quieran hablar cómodamente y compartir información en su idioma. Al llamar al número de contacto de CARD (1-800-333-4530 o 813-974-2532), se escucha la alternativa de comunicarse con alguien que hable español, al presionar el número 1. Esto lleva a la persona que llama, directamente a nuestra línea en español donde se atenderá a la persona en su idioma. También se puede acceder la línea directa en español llamando al 813-974-2297.

Además, CARD-USF está en el proceso de ofrecer una gran parte de sus materiales informativos traducidos al español para mejor provecho de nuestra comunidad hispana.

En nuestras páginas de Internet tenemos hojas informativas y materiales traducidos al español dentro del área de "Resources" - "Fact Sheets" o "Materials" <http://card-usf.fmhi.usf.edu/>

También contamos con un buen número de adiestramientos traducidos al español, entre los cuales se encuentran: Desorden del Espectro de Autismo: Una Perspectiva General, Obtenga lo que su Hijo Necesita, Entrenamiento para Usar el Baño, Enseñando a su Niño a ser Independiente en las Destrezas de las Rutinas Diarias, Comprendiendo e Interviniendo con la Conducta Retadora de Niños Pequeños, Estrategias de Apoyo para la Transición del Niño y Ayudando a los Niños con Autismo a Aprender a Comunicarse. Cualquier persona interesada, puede tener acceso a estos adiestramientos, comunicándose directamente con nosotros.



Finalmente, estamos ofreciendo servicios de traducción o asistencia en español a los constituyentes que lo soliciten, en la comunicación con sus consultores, incluyendo visitas al hogar o en cualquier otra ocasión.

Esperamos seguir ampliando nuestros servicios en español en el futuro y seguir trabajando con la comunidad hispana de cerca para ayudarlos en sus necesidades particulares.

Save the Date for Fiesta by the Bay: *Friday, April 20, 2007!*

We cordially invite you to join us for Fiesta by the Bay on April 20, 2007 at Gaspar's Grotto in Ybor City, Florida. The Fiesta by the Bay is a lively and spirited party including great music, food and drinks, salsa dance lessons, and prizes, all while supporting CARD. Last year over 100 people enjoyed the first annual Fiesta by the Bay while bidding on silent auction items and dancing the night away.

Please consider becoming a "Hot Hot Hot" Chili Pepper at the \$5,000 level, a Sombrero at \$3,500, a Maracas Sponsor at \$1,000 or a Bongo Sponsor for \$500 today!!! Additional admission, sponsorship and program information for Fiesta by the Bay 2007 is available by contacting Christine Rover at 813-974-9264 or email her at crover@fmhi.usf.edu

Thank you for your support!!! We will look for you at the Fiesta by the Bay!!!

Walk for Autism Research-2006

Thank you to all the "scallywags" who participated in the walk for autism research, those who joined us in spirit, and those who supported the Southwest Florida Walk! Our team raised \$1,638 which far surpassed our goal. Team Webb raised over \$1,000 toward the treasured goal and received a Pirates of the Caribbean "It's all about the booty" bag, to carry their loot! CARD Consultant Neill Broderick was our best dressed pirate, Vivian Herrero's family displayed a great family spirit, and consultant Christine McNamara's son Colin was decked out in his Buccaneer gear (so they will not have to walk the plank!!).

Autism Speaks announced that the total received by the day of the Walk

was over \$160,000 and at least 2,500 walkers participated! It was the largest inaugural Walk in the Country!

Our pink and white balloons were a special tribute for our friend Ashley. In order to honor Ashley and her loving spirit, our team members carried these balloons and released them at the end in order to "send the balloons to Ashley in heaven".

Thank you again for supporting the CARDaneers and our partnership with Autism Speaks and their fundraising efforts.

Join the Jolly Rover and CARDaneer crew as we set sail for our next adventure:

Sunday, February 11th: A Gift of Love, Auction for Autism!



The CARDaneer crew takes a moment to enjoy the Autism Speaks festivities

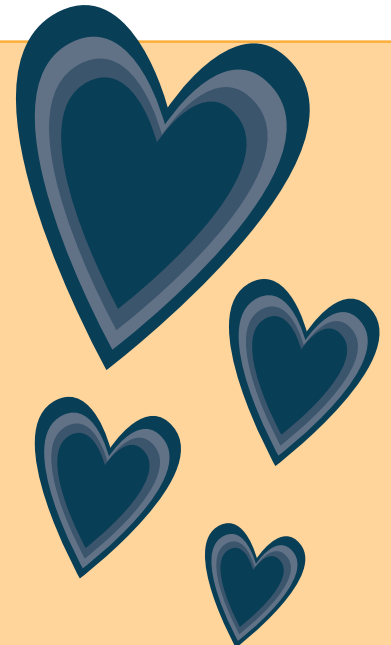


The CARD display table at Autism Walk 2006

Kaleisia Tea Lounge hosts: "The Gifts of Love Auction for Autism"

On Sunday evening, February 11th, Kaleisia Tea Lounge at Fletcher and 15th Streets in Tampa is hosting an auction to benefit CARD. Silent and live auction items will be available, as well as, of course, a selection of Kaleisia's finest teas and goodies. Last year's auction raised money for a local arts program and included such items as a homemade apple pie, snickerdoodles, and services galore. Live entertainment and educational information about CARD will be ongoing throughout the evening.

Don't buy a Valentine for your sweetheart too early this year; please join us for "The Gifts of Love Auction for Autism" and say, "I love you" to someone you love and to someone with autism.



Positive Beginnings: Supporting Young Children with Challenging Behavior

Challenging behavior of young children is one of the most stressful issues faced by early childhood educators and parents. Early educators in preschools and home visiting programs often feel unprepared to meet the needs of young children with challenging behavior. CARD-USF in Fort Myers presented the Positive Beginnings curriculum, developed as a joint project of University of South Florida and Florida State University, at Edison College in Lee County to help build the capacity of early childhood educators to understand and address severe and persistent challenging behavior using evidence-based interventions.

The regional training was a collaborative effort of the Southwest Florida Professional Development Partnership (PDP), Early Learning Coalition of Southwest Florida, Lee County Head Start, and Technical Assistance and Training System (TATS). Training and technical assistance for the Fort Myers team was provided by Rochelle Lentini, Division of Applied Research and Educational Supports, Department of Child and Families Studies, USF.

Southwest Florida's response to Positive Beginnings exceeded expectations. Plans to fund a "Train-the-Trainer" replication for instructional personnel in Charlotte, Collier, DeSoto, Lee, Hardee, Hendry and Glades counties is on the 2007 agenda of the PDP Early Childhood Committee. Multi-agency partners are providing the resources

to reproduce individual training manuals and instructional materials for up to 30 early childhood professionals from school-based and community child care programs. Instructional teams from each county will receive training by CARD-USF, Fort Myers. Each team will make a commitment to present the curriculum in their respective community, beginning this summer.

The four-day "Train-the-Trainer" program, February 26 through March 1, will include Positive Beginnings and Creating Teaching Tools for Young Children (TTYC) with Challenging Behavior. The TTYC tool kit, including routine-based support plans, visual strategies and social stories to help young children be successful in the classroom and other early learning environments, will be among materials trainers will receive. Trainees will also have the opportunity to co-train with CARD-USF staff in March 2007 when the Positive Beginnings curriculum is offered again to the early childhood community. Lee County Schools is hosting the training, beginning March 20, at Ray Pottorf Elementary in Fort Myers. FDLRS is hosting TTYC "make and take" sessions for the graduates. Participant materials and incentives are again funded by members of the PDP Early Childhood Committee.

Positive Beginnings was developed by a team of faculty who has expertise in early intervention, behavior

support, communication disorders and developmentally appropriate practice. Each module includes instructional content, real life examples of children within community programs, and group activities. A case study approach is used in several modules to support the learner in applying newly learned concepts. Topics include:

- social and communication development,
- determining the meaning of challenging behavior,
- positive behavior interventions and support,
- teaming to build a behavior support plan,
- intervention in everyday settings, and
- supporting families.

Helpful links

To learn more about Positive Beginnings and preview the modules, resource links, and partners go to: <http://pbs.fsu.edu/PBS.html>

Creating Teaching Tools for Young Children with Challenging Behavior was developed by Early Intervention Positive Behavior Support, Division of Applied Research and Educational Supports (DARES), University of South Florida. To preview the tool kit, go to: <http://challengingbehavior.fmhi.usf.edu/>

What's New on the CARD Website?

If you take a look at the CARD website (<http://card-usf.fmhi.usf.edu>), you'll see some new resources on it! These additions are the first of many new and exciting features you'll find on our website in the near future as we begin to create new online resources and learning opportunities for families and professionals.

Already on the website is Positive Educational Planning. This downloadable (PDF) booklet is based on the belief that family members are always a child's first teachers and therefore have much important information to share with others involved in their child's education. Included in the booklet are sections that guide families to describe their child as an individual and as a family member, share their perspectives on their child's learning characteristics, and identify desired educational priorities and outcomes. It can also be used as a preparation tool in advance of an educational planning meeting or as a general portfolio for sharing information about your child with others.

If you take a look at the Frequently Asked Questions (FAQs) page of the website, you'll see a new animated feature, produced collaboratively between AutismLink.com and CARD-USF. Currently, you'll find several questions that are often asked by families of newly diagnosed or young children with autism. As this feature is developed, you will begin to find a range of questions pertaining to behavior supports and interventions, educational issues, learning and skill acquisition, planning for the future, and other issues that are most important to families. These questions will be answered by the voice of CARD-USF staff members with particular expertise in each area. This feature can also be accessed through the AutismLink website at <http://www.autismlink.com>.

Another new addition to the website is CARD-USF's first multi-media presentation, Believe in One; Believe in All, which illustrates the successful school experiences of a 3rd grade student with autism. Composed

of still photographs and interviews, this presentation captures the perceptions, beliefs, and hopes for the student's future expressed by his family, educational team members, and 3rd grade peers. As such, the presentation addresses the questions "Why is inclusion so important for students with autism?" and "What are the benefits for all involved?"

Please help us with the development of additional online learning resources for families! As we begin to develop a broader range of these materials, we would like to know if there are specific topics or areas of need that you would like to learn more about. Your feedback and suggestions will help us develop materials in a range of formats that will be most useful to all our constituents.

Please visit the site map on the CARD webpage to navigate to any of the materials discussed in this article. For more information please contact Mary Reed at reed.fmhi.usf.edu.

Autism Support

Autism Society of America (National Organization)
7910 Woodmont Ave, Suite 650
Bethesda, MD 20814
Phone: 301-657-0881 • Fax: 301-657-0869
<http://www.autism-society.org/>
Ven Sequenzia, President - Florida State Chapter #131
2858 Remington Green Circle, Tallahassee, FL 32308
Contact: 850-997-7233 • Fax: 305-652-8896

CHARLOTTE COUNTY

Autism Speaks

Southwest Florida Branch (Formerly NAAR)
Contact Sharon Boyd for meeting dates and times
or to be added to their mailing list for upcoming events.
Location: Port Charlotte, FL
Phone: 941-697-9772 • Email: swflorida@autismspeaks.org

COLLIER COUNTY

Naples Spectrum Support Group

Meets the third Wednesday of the month.
Time: Meetings begin at 7:00pm
Location: Therapeutic Integration Services offices,
2960 Immokalee Rd #3, Naples, FL 34110
Contact: Rob Moher: 239-593-8669
Email: robandsandra@mindspring.com

HILLSBOROUGH COUNTY

KIDDS (Keys for Individuals with Developmental Disabilities)

Meets several times throughout the school year.
Time and Location will be provided when you RSVP.
To RSVP contact one of the following individuals.
Debbie Valdes via email at Debra.Valdes@sdhc.k12.fl.us
Phyllis Guthman via email at Phyllis.Guthman@sdhc.k12.fl.us
To leave a voice message, please call 813-837-7740 or 7732.

Concerned Parents of Autistic Children

Meets the last Sunday of the month from 3:00 - 5:00 pm
Nature's Health Food Store in Valrico (Corner of Lithia Pinecrest
Road and Bloomingdale at the Publix Shopping Plaza)
Contact: Dr. Moursi 813-643-9393

PASS (Parents of AS/HFA Support Group)

Support group for parents of children with Asperger's
Syndrome or High Functioning Autism meets monthly
at the Bloomingdale Library.
Contact Liisa at liisaneumann@tampabay.rr.com for date,
time, and location confirmation or to be put on their
contact list.

Asperger's Syndrome (Moderated support group for adults)

Ben Graffam, Ph.D. moderates a support group for adults
above the age of 18.
Location: Memorial Hospital of Tampa, 2919 Swann Ave.
Group meets two times per month on Thursday evenings.
The cost to attend is currently \$25 per session. Family
members do not attend but may greet Dr. Graffam after the
session. If you are going to attend you must RSVP to Dr.
Stephen Kreitzer. Please respond to krei513@aol.com if you
are interested and to get more details.

Lauren's Link (Sibling Support Group)

A fun, supportive group for school-age kids who have a
sibling with special needs.
Location: St. Andrew's United Methodist Church, 3315
Bryan Road (at Bloomingdale Ave.) in Brandon. Family
Life Center Bldg., Room 304.
Meets: 2nd Friday of the month from 7:00 pm - 8:30 pm.
Contact: Kris at 813-671-1038 (Evenings) or contact
MaryJo by email at wsmith68&tampabay.rr.com

STAND (Statewide Advocacy Network on Disabilities)

Hillsborough Monthly Chapter Meetings (All
disabilities)
Meets: 3rd Thursday of the month
Time: 6:30 to 8:30 PM
Location: Children's Board of Hillsborough County
1002 E. Palm Avenue, Tampa
Email: advocate@standonline.info

LEE COUNTY

Adonis Autism Center of Southwest Florida

Time: 3rd Thursday (monthly), 7:00 p.m.
Place: Bashaw home, 1456 Lynwood Avenue, Ft. Myers
Contact: Maureen Bashaw, 239-332-5395
Website: <http://www.adonisautismflorida.com>

Southwest Florida ASA Chapter #555

Contact: Fran Swanson, 239-768-0723
Please call for meeting times.

PASCO (NORTH) COUNTY

Hernando Autism Parenting & Personal Experience Network (HAPPEN)

Time: 3rd Wednesday (monthly), 7:00 - 8:30 pm
Location : Pediatric Therapy Works
Contact: Leslie Bolen at 352-683-0209 for directions

PASCO COUNTY

AWARE 4 Autism (Are We Awake Ready & Educated for Autism?)

Time: 7pm 3rd Tuesday of Every month
Location: Holiday Recreation Complex., 2830 Gulf Trace
Blvd., Holiday Fl 34691
Contact: Monica Bice at 727-945-0947
or Email: AWARE4Autism@msn.com

Rock of Refuge Faith Based Support Group

Group covers all special needs/disabilities, including autism,
ADHD, mental retardation and physical disabilities.

Time: 2nd Friday (monthly), 7:00 - 8:30 pm
Location: Victorious Life Church, 6224 Old Pasco Rd.,
Wesley Chapel, Bldg. 300
Respite care provided during meeting -- must RSVP for respite!
Call the church office 813-973-2230 for more information or
to RSVP for respite.

PINELLAS COUNTY

Gulf Coast ASA Chapter #134

Time: 2nd Wednesday (monthly), 7:00 - 9:00 p.m.
Place: Abilities in Clearwater, 2735 Whitney Rd., Clearwater
Contact: Filomena MacDonald, 727-789-0082

POLK COUNTY

Circle of Friends Support Group

Non specific to any one disability.
For the next Circle of Friends Parent's Meeting, please call
Lynne Pabani for place and time at 813-676-8768 or the
Circle at 813-679-2507 and ask for Lynne.

Parental Education for Autism in Children Everywhere (PEACE)

Time: 1st Tuesday (Monthly) 6:00 - 8:00 pm
Place: Family Fundamentals Bldg.
1021 Lakeland Blvd., Lakeland
Contact: Nicole 863-686-1221 ext 228
or email Nikki73170@aol.com
Website: <http://www.peacelakeland.com/>

Parents Rallying for Individuals with Disabilities Everywhere!

(P.R.I.D.E.) Non specific to any one disability.
Time: 3rd Thursday (Monthly) 6:30 pm - 8:00 pm
Place: Family Fundamentals Bldg.
1021 Lakeland Blvd., Lakeland
Contact: Connie Carter, 863-701-1151 X-141
Nicole Torres, 863-686-1221

SARASOTA COUNTY

South Florida Autism Coalition

Pinnacle Academy
833 Magellan Drive, Sarasota FL 34243
7 PM 3rd Thursday every month
Phone at the school: (941)355-4696

*Please contact CARD-USF with changes or additions. Support
Group listings are provided as a service and are not an
endorsement by CARD-USF.*

CENTER FOR AUTISM AND RELATED DISABILITIES

The Division of Applied Research and Educational Supports
Florida Mental Health Institute-MHC 2113A
University of South Florida
13301 Bruce B. Downs Blvd.
Tampa, Florida 33612

GIFT/PLEDGE FORM

Please consider donating to the Autism Services Fund to support families and special events. We appreciate your help and commitment. (Detach this form and send with your donation to the attention of Dr. Karen Berkman at the address above).

Please identify whether you are giving a GIFT or making a PLEDGE.

I wish to give a GIFT of \$ _____.

I wish to make a PLEDGE of \$ _____ over _____ years/months
starting on the following date: _____

Please send me a pledge reminder:

(Please select one) Annually Semi-Annually Quarterly

I am making a pledge payment of \$ _____ at this time.

My gift or pledge payment will be paid by (Please select one)

Check (Please make your check payable to the "USF Foundation, Inc., Autism Services Fund")

Stock Transfer (Please call the Gift Planning Office at (813) 974-1897
for simple instructions on how to make a stock transfer.)

Electronic Fund Transfer (Please call the Foundation Business Office
at (813) 974-3423 for instructions on how to make an electronic fund transfer.)

Credit Card Charge \$ _____ to the following credit card
(Please select one) VISA MasterCard American Express Discover

NAME AS IT APPEARS ON CREDIT CARD

CREDITCARD NUMBER

EXPIRATION DATE

Donor Information:

Company Name: _____

Contact Person: _____

Address: _____

City, State, Zip: _____

Phone: _____ E-Mail Address: _____

Donor Signature: _____

Select how you would like your gift or pledge to make a difference in the lives of those with autism and related disabilities.

To enhance the programs and services CARD provides to individuals of any age with autism.

To support special events and activities.

CARD-USF
invites you to a...

Fiesta
by the bay

Friday, April 20, 2007 at Gaspar's Grotto

1805 E 7th Ave, Tampa, FL 33605
Door opens at 5:00 p.m.



Return Service Requested

Non-Profit. Org.
US POSTAGE
PAID
Tampa, FL
Permit No. 257

Department of Child & Family Studies
Louis de la Parte Florida Mental Health Institute
University of South Florida
13301 Bruce B. Downs Blvd., MHC 2113A
Tampa, FL 33612-3899