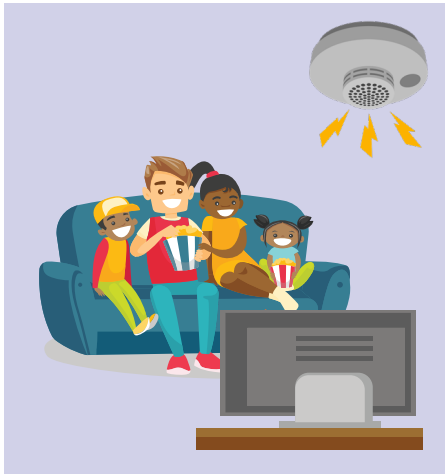


AUTISM SPECTRUM DISORDER & FIRE ALARM SAFETY

When the Smoke Alarm Goes Off...



The smoke alarm beeps and says, "Fire! Fire!"



I go outside.



I go to my meeting place.



My family is safe.

AUTISM SPECTRUM DISORDER & FIRE ALARM SAFETY

Choose the right alarm for your family:

Smoke alarms have a variety of options to choose from. When considering an alarm for your home, consider the needs of your loved one with ASD. Talking alarms that say things such as “leave the house now” or “fire, fire” may provide more concrete instructions for an individual with ASD.

Create an evacuation plan:

Individuals with ASD typically do well with specific plans and rules. Evacuation plans should be written down so they can be reviewed at any time. Including visuals may help to increase the clarity for your loved one with ASD.

Choose a meeting place:

Meeting places for individuals with ASD are recommended to be farther from the home than may typically be necessary. This is because individuals with ASD can be strictly adherent to rules and may not use their judgement to move farther away if the fire spreads or becomes explosive. Do not choose bikes, cars or trash cans as safe meeting places because their locations may change over time. Have your loved one with ASD practice going to the meeting spot from their favorite places in the home or apartment. Repetition and practice are the key elements to your family evacuating safely in the event of a fire.

Practice:

Practice your evacuation when your loved one with ASD is calm and happy, as this will increase the likelihood of them remembering. Make practicing a regular occurrence in your home to ensure that your loved one will commit the practice to memory. Using visual cues while you practice will help your loved one with ASD to understand and remember.



Florida's First Choice for Autism Support

The Center for Autism & Related Disabilities (CARD) provides support and assistance with the goal of optimizing the potential of people with autism spectrum disorder and related disabilities.

card-usf.fmhi.usf.edu



CENTER FOR AUTISM & RELATED DISABILITIES AT USF
College of Behavioral & Community Sciences
University of South Florida
13301 Bruce B. Downs Blvd., MHC 2113A
Tampa, FL 33612
In Florida: 1-800-333-4530 or 813-974-2532

A Program of:

