

Do you know the signs of Autism?

Statewide Autism System of Care
Funded by the Florida Developmental Disabilities Council
Health-Care Task Force



Sponsored by the United States Department of Health and Human Services, Administration on Developmental Disabilities and the Florida Developmental Disabilities Council, Inc.



1 in 166 children are diagnosed with an autism spectrum disorder (ASD) each year. **You as a physician, may be the first or only person to conduct a timely referral or diagnosis.**

Red Flags

- **Inappropriate gaze**
- **Lack of sharing enjoyment or interest**
- **Little or no response to name when called**
- **Lack of coordinated facial expression, gesture, and sound**
- **Lack of showing (e.g., pointing, reaching, or waving)**
- **Lack of babbling and/or unusual intonation and/or pitch of voice**
- **Repetitive movements of posturing of body, arms, hands, or fingers**
- **Repetitive movements with objects**
- **Any loss of speech/babbling or social skills**

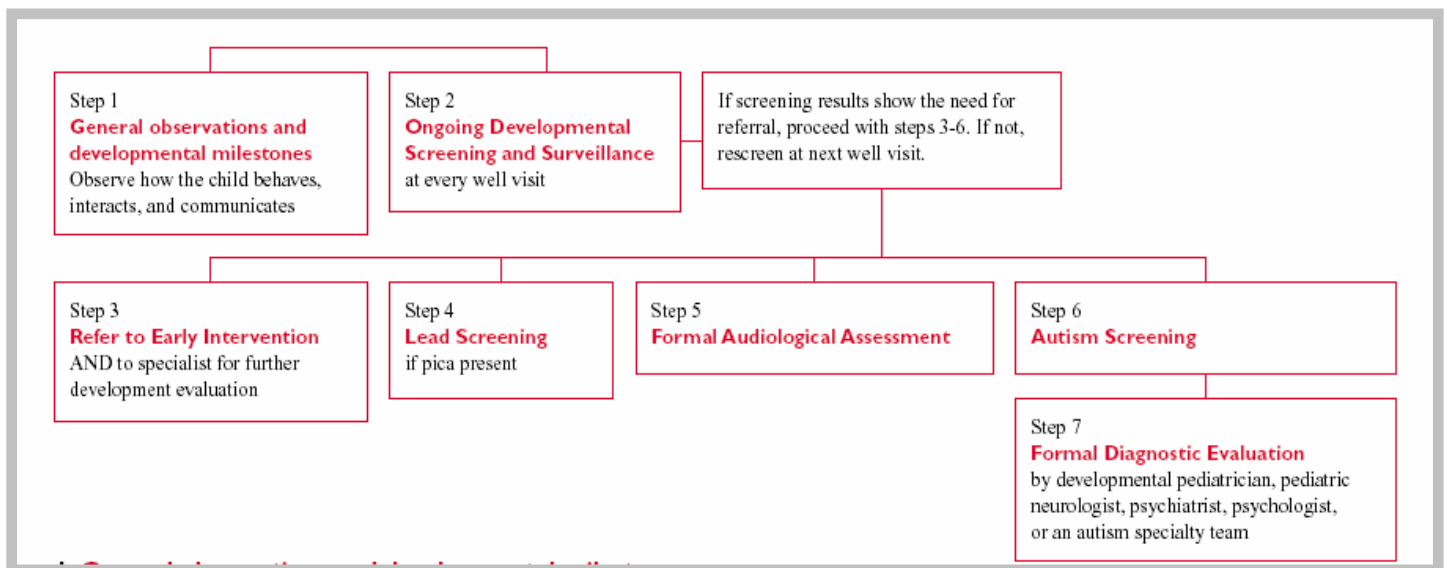
Why Provide Early Screening?

Intensive early intervention before age 3 results in greater impact after age 5, this includes:

- Presence of neurologic plasticity at younger ages
- Better school placement outcomes (general education vs. special education)
- Better chance of graduating from high school
- Greater developmental gains
- Higher likelihood to live independently
- Positive economic impact over a life-time with early intervention

Recommended Screening Guidelines:

The following flow chart provides 7 steps through which a child should be screened for ASD.



The Role of the Medical Home

Once an ASD diagnosis has been made, the medical home plays a central role in coordinating the medical and non medical care for the child through open communication and collaboration on service delivery.

For a list of references and additional information: www.firstsigns.org
<http://www.medicalhomeinfo.org/screening/autism.html>